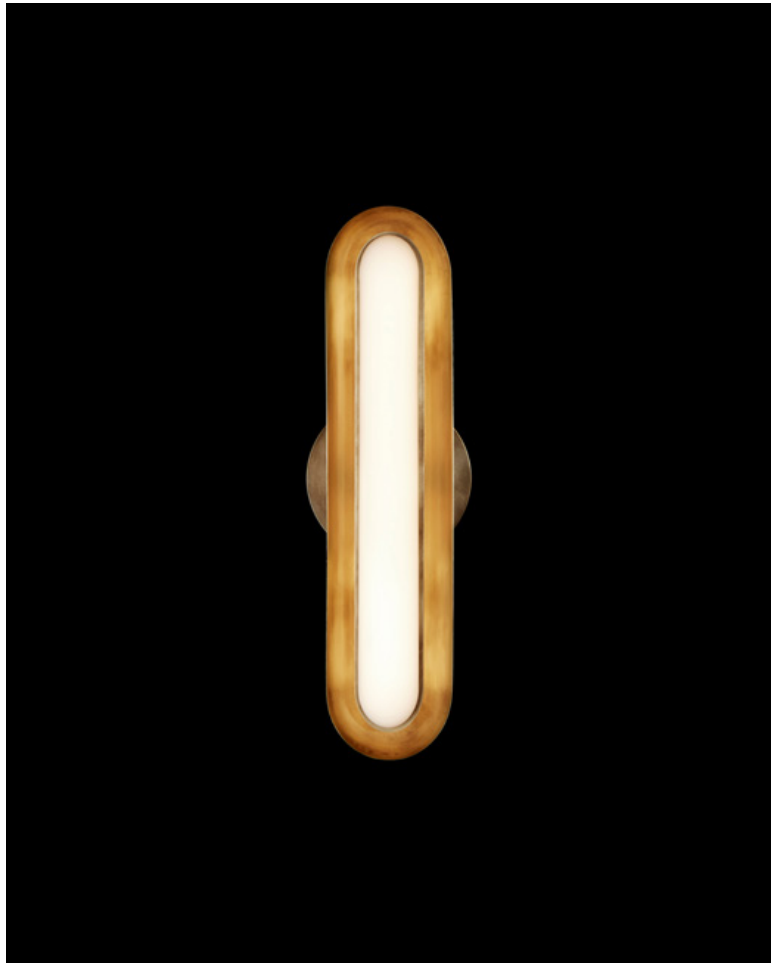


# A P P A R A T U S



AGED BRASS

## CIRCUIT : 1

### REFERENCE

RHYTHM AND SYNCOPATION  
HALSTON  
AFTERGLOW

### COMPOSITION

GLOWING GLASS CAPSULE  
BRASS SHADE AND ARMATURE

# A P P A R A T U S

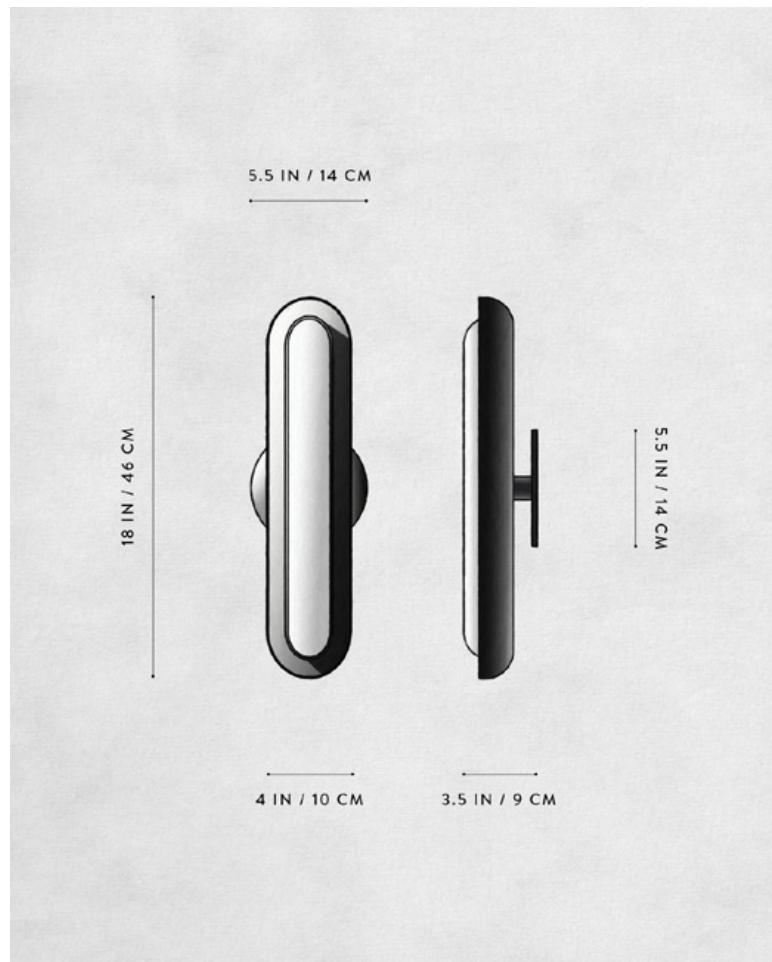


AGED BRASS



AGED BRASS

# A P P A R A T U S



## DIMENSIONS

## WEIGHT

## PRICE

## VOLTAGE

## LAMPING

## DRIVER LIFE

## DEPOSIT

## BALANCE

## LEAD TIME

## CIRCUIT : 1

18 H, 5.5 W, 3.5 D IN

46 H, 14 W, 9 D CM

APPROX. 5 LBS / 2 KG

FROM \$3050

FROM \$3500 FOR TWO-TONE SHADES

TWO-TONE IS AGED BRASS SHADE INTERIOR  
WITH BLACKENED BRASS SHADE EXTERIOR

120-240

UL / CE

16W DIMMABLE LED

1700 LUMENS

2700K

50,000 HOURS

50% UPON ORDER

DUE PRIOR TO SHIPPING

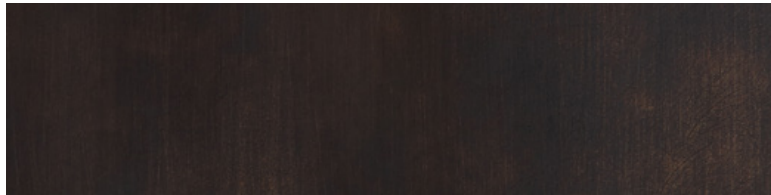
PLEASE REFER TO WEBSITE

FINISHED AND ASSEMBLED BY HAND IN NY  
DOMESTIC AND IMPORTED COMPONENTS

# A P P A R A T U S



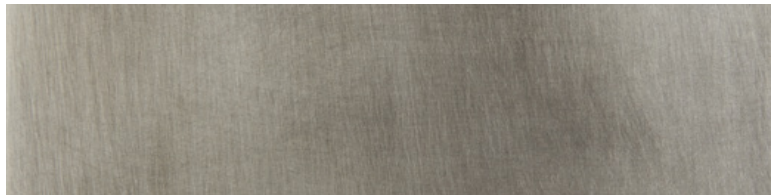
AGED BRASS



OIL-RUBBED BRONZE



BLACKENED BRASS



TARNISHED SILVER

## METAL

### CIRCUIT

AGED BRASS [WAXED]

OIL-RUBBED BRONZE [WAXED]

BLACKENED BRASS [WAXED]

TARNISHED SILVER [LACQUERED] ADD 35%